



# MONTHLY MEMBERSHIP PROGRESS REPORT

District 5M 9

Results as of: 06/30/2018

GMT: MICHAEL MOLENDIA

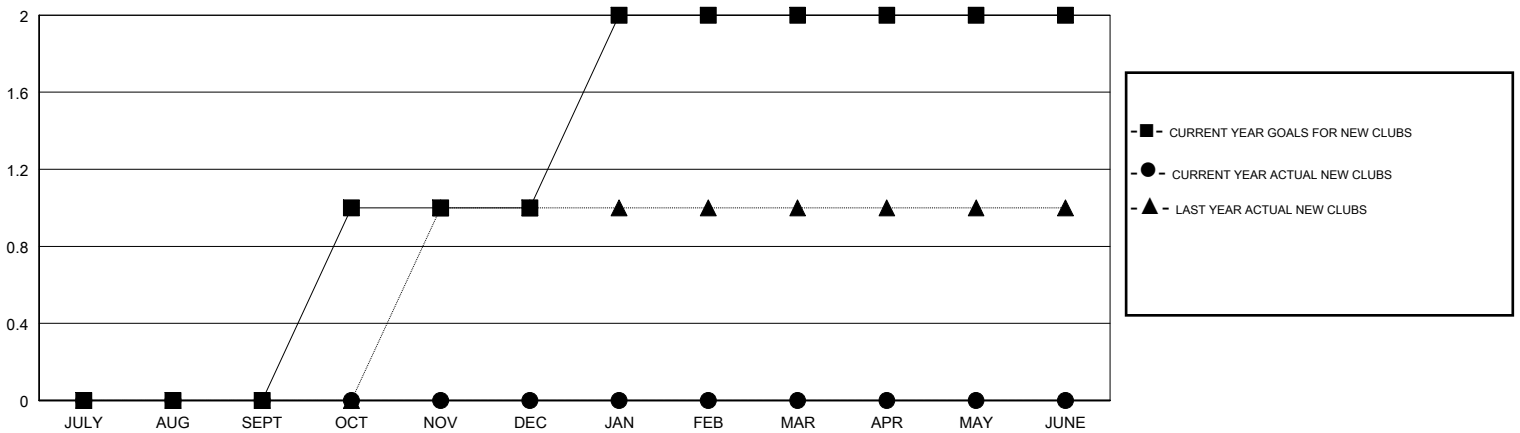
LOCATION MINNESOTA

GMT CA

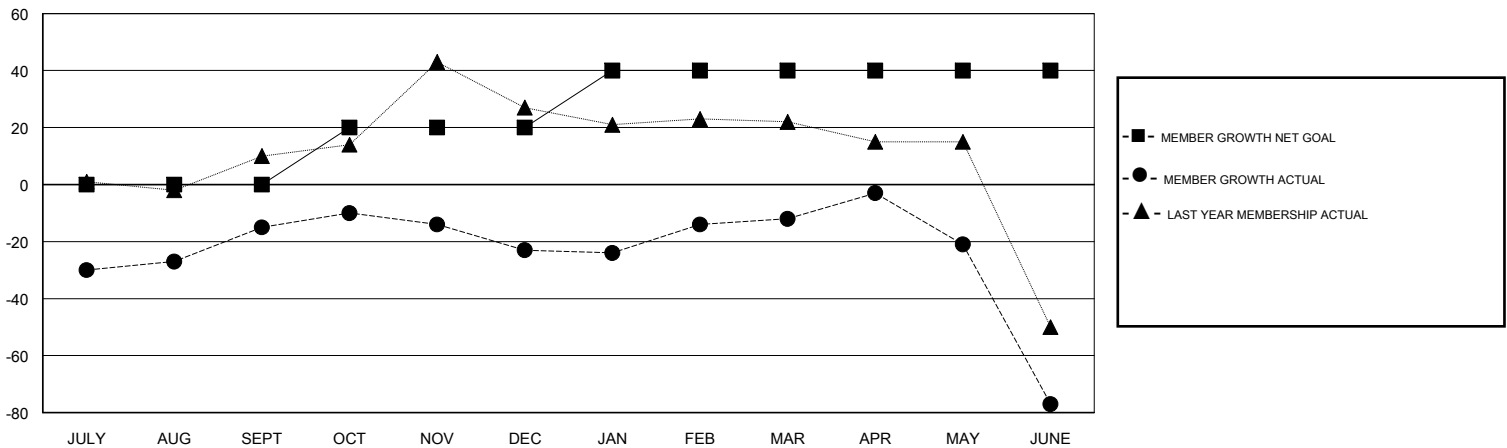
Clubs			
RESULTS FOR 2017-2018			
QUARTER	NEW CLUB GOAL	NEW CLUBS	DROPPED CLUBS
JULY/AUG/SEPT	0	0	0
OCT/NOV/DEC	1	0	0
JAN/FEB/MAR	1	0	0
APR/MAY/JUNE	0	0	0

Members			
RESULTS FOR 2017-2018			
QUARTER	MEMBER GROWTH NET GOAL	MEMBER GROWTH ACTUAL	DROPPED MEMBERS ACTUAL (including transfers)
JULY/AUG/SEPT	0	73	78
OCT/NOV/DEC	20	54	50
JAN/FEB/MAR	20	51	38
APR/MAY/JUNE	0	93	149

GOALS AND ACTUAL NEW CLUBS CUMULATIVE



GOALS AND ACTUAL MEMBERS CUMULATIVE



DROPPED CLUBS: 0	54 CLUBS OF 67 ADDED 1 OR MORE NEW MEMBERS	<u>GENDER DISTRIBUTION</u>	
DROPPED MEMBERS		MALE	1,392 (63.22%)
DECEASED	49	FEMALE	810 (36.78%)
CLUB CANCELLED	0	Women Percentage Fiscal Year Goal: 38%	
OTHER	267	TOTAL FAMILY UNIT MEMBERS	0
TOTAL	316	FAMILY MEMBERS PAYING HALF DUES	0

[CLICK HERE FOR CUMULATIVE MEMBERSHIP DATA](#)